

Cotton—King of Crops

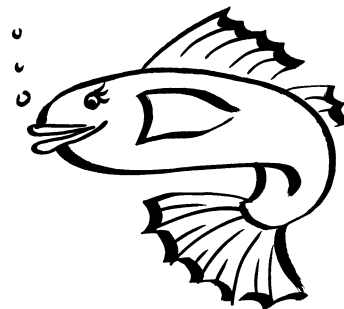
Circle the things made with cotton.



Sock



Strawberries



Fish



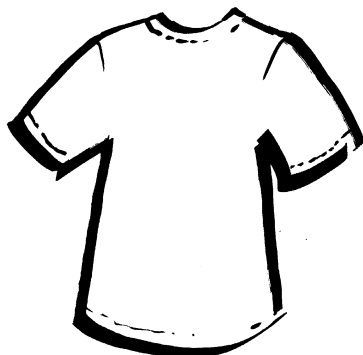
Ice Cream



Cake



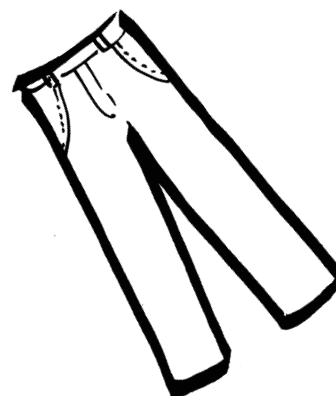
Carrot



T-Shirt



Edison's Light Bulb



Levi's

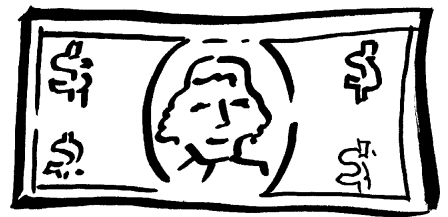
Things Made with Cotton

Draw a line from the words to the correct picture.

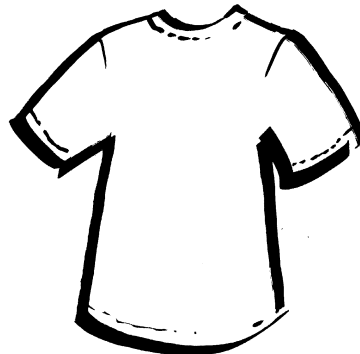
Towel



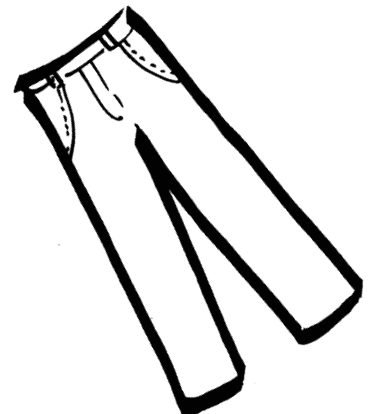
Sock



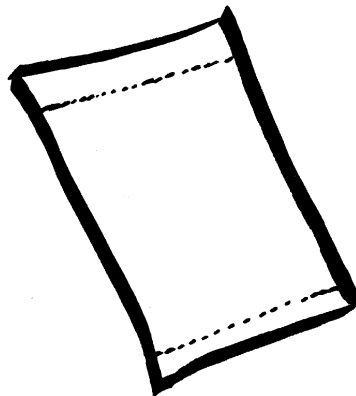
Levi's



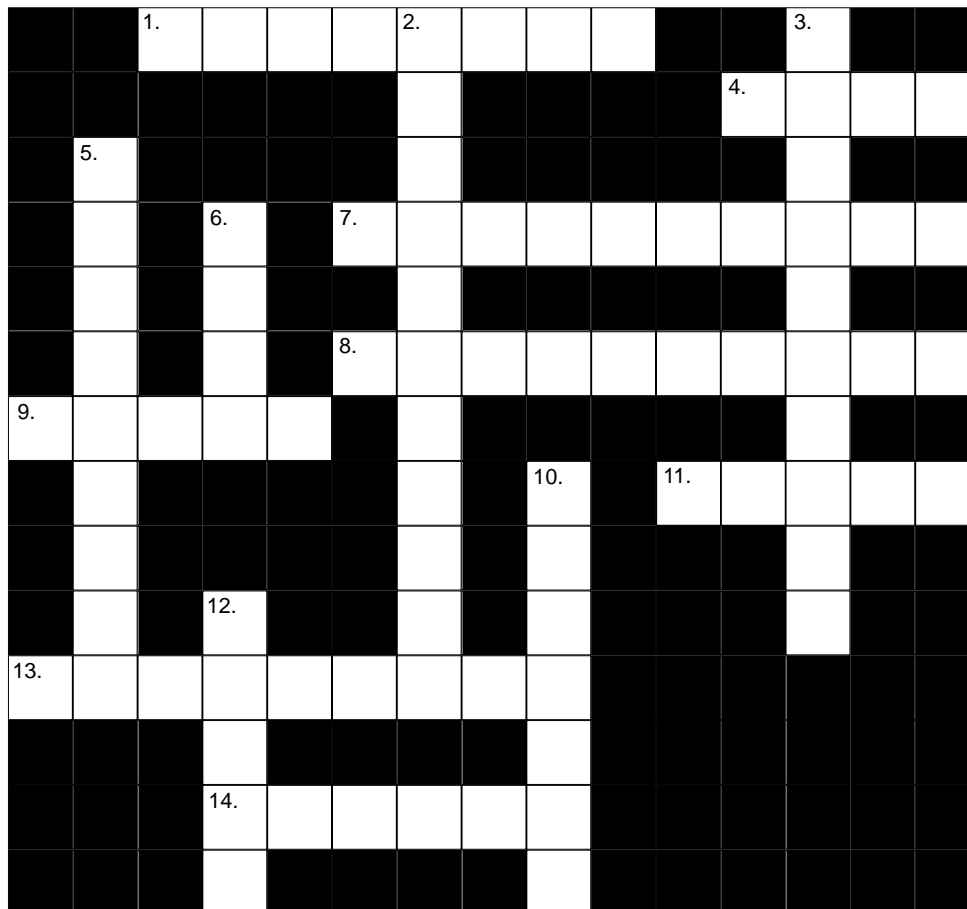
T-Shirt



Money



Cotton—King of Crops Crossword



Across

1. Cellulose from cottonseed linters is used to make paper _____.
4. Creates about 50,000 _____ for Georgia.
7. Cotton filament was used in _____.
(2 words)
8. Oil is made from _____.
9. Livestock feed is made from meal and _____.
11. Cotton Gold Rush garment: _____.
13. A gin does this: _____ fiber or lint from seed.
14. Gin is the shortened word for _____.

Down

2. Cotton's in harmony with our _____.
3. 1900's cotton crop destroyer: _____.
(2 words)
5. Made from cottonseed linters _____.
6. Part of cotton plant that holds fiber: _____.
10. Cottonseed is _____ to make oil.
12. Cotton is packed in _____ for use in textiles.

**Show how much you've learned about cotton
and answer the questions below.**

- 1) Name a major cause for the start of the economic depression of the South in the early 1900's.
- 2) After the boll weevil's destruction to cotton, name a second big problem faced by the cotton industry beginning in the 1970's. Do you think it is still a challenge to cotton today?
- 3) When was cotton first planted in Georgia for commercial purposes?
- 4) In the beginning, why was cotton so well suited for growing conditions in Georgia?
- 5) What did Eli Whitney invent and why was it so important to the cotton industry?
- 6) In Georgia, what program was started to fight the boll weevil and when did it begin?
- 7) Why is cotton called "the food and fiber" crop?
- 8) Name something made from cotton that is a food item for people, and tell how it is made.
- 9) List three different types of things made from "cottonseed linters."
- 10) What cotton products are used to make livestock feed?
- 11) Name the part of the cotton plant that the fiber comes from.
- 12) Explain two ways that cotton is "in harmony with our environment."

Cotton—King of Crops Word Scramble

The following words can be found among the scrambled letters below.

Choose from these words:

cellulose
livestock
denim
economy
farming
Gold Rush

acres
harvest
cottonseed oil
Civil War
textile
plantation

cotton gin
Samuel Morse
telegraph
environment
Eli Whitney
fertilizer

south
industry
production
United States
meal
George Washington

- | | |
|---------------------------------|-----------------------------|
| 1. IEL YNETHWI _____ | 13. NUPDTCORIO _____ |
| 2. CTTNSDEEEO LIO _____ - _____ | 14. IVLCI WRA _____ |
| 3. KCTSVLOEI _____ | 15. SHEVRAT _____ |
| 4. NVRNMNTEIOE _____ | 16. LOGD HRSU _____ |
| 5. TTXLEIE _____ | 17. HLERTEGAP _____ |
| 6. THSOU _____ | 18. TOCTNO NGI _____ |
| 7. MNDEI _____ | 19. ARINFGM _____ |
| 8. LLEEULOCS _____ | 20. YRUDINST _____ |
| 9. EIELZRTFIR _____ | 21. ONOEYMC _____ |
| 10. LAME _____ | 22. UMSLAE SOMER _____ |
| 11. ASRCE _____ | 23. TENUDI TSESTA _____ |
| 12. NAATTOPNL _____ | 24. REGOGE IHAWNNOSGT _____ |

Cotton—King of Crops Word Search

The following words can be found among the jumbled letters in the box below.
Circle them horizontally, vertically, diagonally, backward and forward.

Circle these words:

boll

bale

cotton

crop

seeds

cushions

hull

muslin

depression

yarn

oil

filament

cellulose

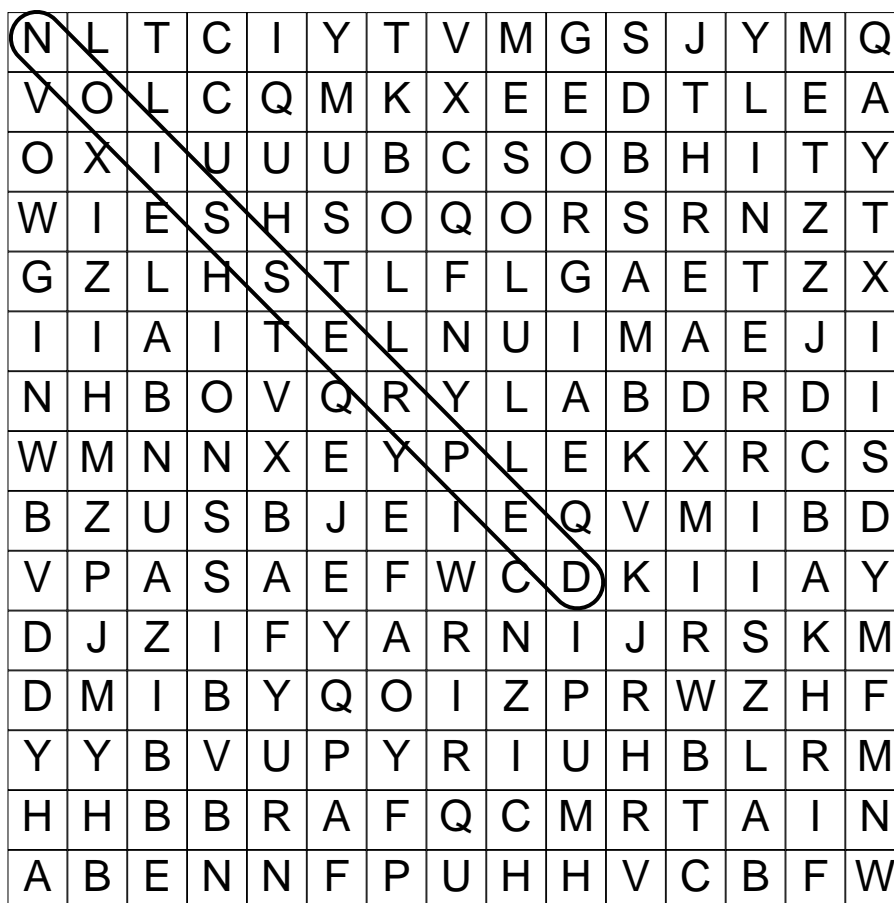
Georgia

fabric

linter

thread

gin



Cotton—King of Crops Cryptogram

Use the code to solve the cryptogram by substituting the letters of the alphabet for the corresponding symbols.

A	B	C	D	E	F	G	H	I	J	K	L	M
♣	☼	▼	☆	⌘	★	◐	♠	♣	●	☼	⊕	⊖
N	O	P	Q	R	S	T	U	V	W	X	Y	Z
♣	☼	✓	★	♥	★	■	!	⌘	☼	◆	→	☞

▼ ☼ ■ ■ ☼ ♣ ★ ♠ ♥ ★ ■ ✓ ⊕ ♣ ♣ ■ ⌘ ☆

_____ was _____

◐ ⌘ ☼ ♥ ◐ ♠ ♣

in _____ in 1733, and the

★ ⌘ ⌘ ☆ ⌘ ♣ ◐ ⊕ ♣ ♣ ☆

_____ came from _____.

▼ ☼ ■ ■ ☼ ♣ ◐ ♥ ☼ ☼ ♣ ☼ ■ ◆ ⌘ ♥

Though _____ was _____ in _____

▼ ☼ ⊕ ☼ ♣ ♠ ⌘ ☼ ◐ ⌘ ☼ ♥ ◐ ♠ ♣ ★ ♠ ♥ ★ ■

_____, _____ was the _____ to

✓ ♥ ☼ ☆ ! ▼ ⌘ ▼ ☼ ◆ ◆ ⌘ ♥ ▼ ♠ ♣ ⊕ ✓ ! ♥ ✓ ☼ ☼ ⌘ ☼

_____ it for _____.

TEACHER RESOURCE: Answers to “Cotton—King of Crops” Activity Pages

Worksheet #1 Circle the Things made with Cotton

Sock Ice Cream T-shirt Edison’s Light Bulb Levi’s

Worksheet #3 Crossword Puzzle

ACROSS

- 1. Currency
- 4. Jobs
- 7. Light Bulbs
- 8. Cottonseed
- 9. Hulls
- 10. Crushed
- 11. Levis
- 12. Bales
- 13. Separates
- 14. Engine

DOWN

- 2. Environment
- 3. Boll Weevil
- 5. Cellulose
- 6. Boll

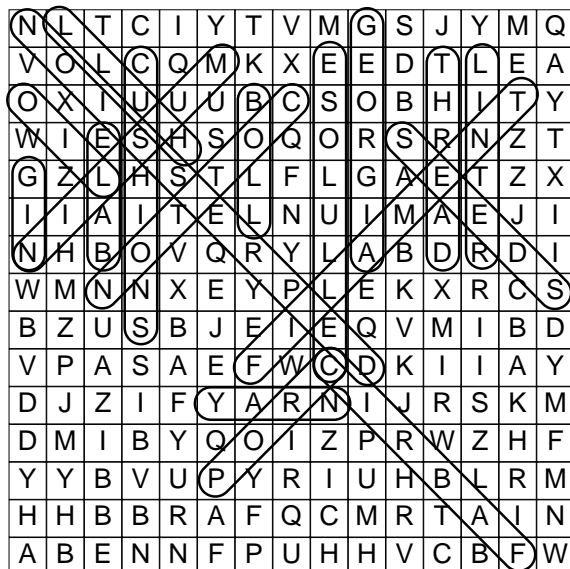
Worksheet #4 Show how much you’ve learned about cotton

1. The boll weevil.
2. Synthetic fibers, especially polyester. SECOND PART IS AN OPINION QUESTION. HOWEVER, MAN MADE FIBERS DO CONTINUE TO CHALLENGE THE COTTON INDUSTRY.
3. Georgia first planted cotton, for commercial purposes, in 1778.
4. Because it is a drought tolerant plant.
5. Eli Whitney invented the cotton gin. It was important because it was labor-saving, replacing the work of fifty people.
6. The Boll Weevil Eradication Program was started in 1987.
7. Food: Cottonseed oil and livestock feed Fiber: Textiles
8. Oil is made from crushing cottonseed.
9. Ice cream, paper currency, photography papers, plastics, etc.
10. Livestock feed is made from cottonseed meal and hulls.
11. The boll (PRONOUNCED “bowl”)
12. Because of the Boll Weevil Eradication Program, growers use fewer pesticides and tillage practices minimize soil erosion. Stalks and leaves are plowed under to enrich the soil and meal from cottonseed, as livestock feed, returns to the soil as fertilizer.

Worksheet #5 Word Scramble

- | | | | |
|-------------------|----------------|----------------|-----------------------|
| 1. Eli Whitney | 7. Denim | 13. Production | 19. Farming |
| 2. Cottonseed Oil | 8. Cellulose | 14. Civil War | 20. Industry |
| 3. Livestock | 9. Fertilizer | 15. Harvest | 21. Economy |
| 4. Environment | 10. Meal | 16. Gold Rush | 22. Samuel Morse |
| 5. Textile | 11. Acres | 17. Telegraph | 23. United States |
| 6. South | 12. Plantation | 18. Cotton Gin | 24. George Washington |

Worksheet #6 Word Search



GEORGIA COTTON COMMISSION
 P.O. Box 1464 • Perry, GA 31069
 Phone (478) 988-4235 • Fax (478) 988-4273
 www.georgiacottoncommission.org
“Serving Georgia’s Cotton Producers Since 1965”